



SD03C THRU SD36C

STANDARD CAPACITANCE TVS ARRAY / ESD ARRAY

APPLICATIONS

- Cell Phone Handsets and Accessories
- Microprocessor based equipment
- Personal Digital Assistants (PDA's)
- Notebooks, Desktops, and Servers
- Portable Instrumentation
- Peripherals
- Pagers



PACKAGE : SOD-323



IEC COMPATIBILITY

- IEC61000-4-2 (ESD) $\pm 15\text{kV}$ (air), $\pm 8\text{kV}$ (contact)
- IEC61000-4-4 (EFT) 40A (5/50ns)
- IEC61000-4-5 (Lightning) 24A (8/20 μs)

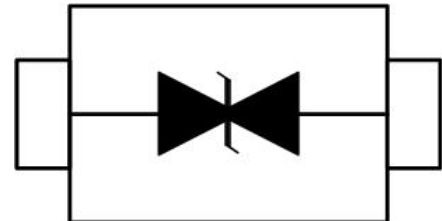
FEATURES

- 500 Watts Peak Pulse Power per Line ($t_p=8/20\mu\text{s}$)
- Protects one I/O or power line
- Low clamping voltage
- Working voltages: 3.3V, 5V, 12V, 15V, 24V, 36V
- Low leakage current

MECHANICAL CHARACTERISTICS

- JEDEC SOD-323 Package
- Molding Compound Flammability Rating : UL 94V-0
- Weight 5 Milligrams (Approximate)
- Quantity Per Reel : 3,000pcs
- Reel Size : 7 inch
- Lead Finish : Lead Free

PIN CONFIGURATION



BIDIRECTIONAL



SD03C THRU SD36C

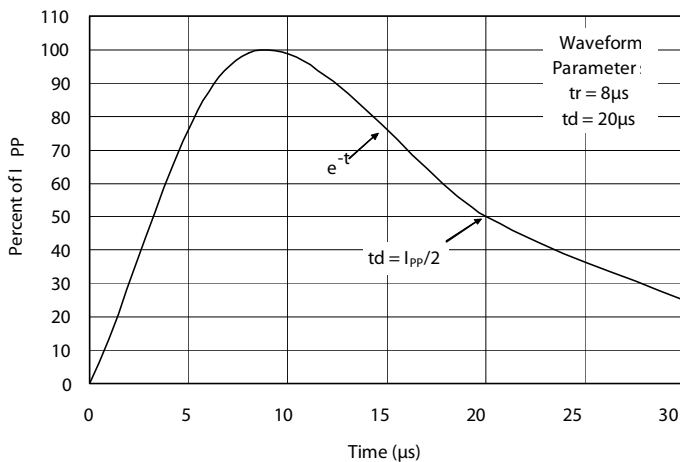
STANDARD CAPACITANCE TVS ARRAY / ESD ARRAY

DIVICE CHARACTERISTIC

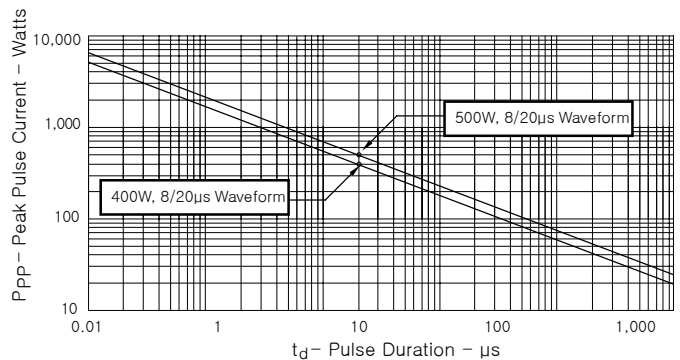
MAXIMUM RATINGS @ 25°C Unless Otherwise Specified			
PARAMETER	SYMBOL	VALUE	UNITS
Peak Pulse Power (tp=8/20µs waveform)	PPP	500	Watts
Lead Soldering Temperature	TL	260 (10 sec.)	°C
Operating Temperature Range	TJ	-55 ~ 150	°C
Storage Temperature Range	TSTG	-55 ~ 150	°C

ELECTRICAL CHARACTERISTICS PER LINE @ 25°C Unless Otherwise Specified								
PART NUMBER	VRWM (V) (max.)	VB (V) (min.)	IT (mA)	Vc @1mA (max.)	Vc @8/20µs		IR (µA) (max.)	CT (pF) (max.)
					(max.)	(@A)		
SD03C	3.3	4	1	7.5	10.5	43	40	450
SD05C	5	6	1	9.8	14.5	24	10	200
SD12C	12	13.3	1	19	29.5	15	1	100
SD15C	15	16.7	1	24	33	12	1	40
SD18C	18	20	1	29	40	9	1	40
SD24C	24	26.7	1	40	46	9	1	40
SD36C	36	40	1	60	75	5	1	45

Pulse Waveform



PEAK PULSE POWER VS PULSE TIME

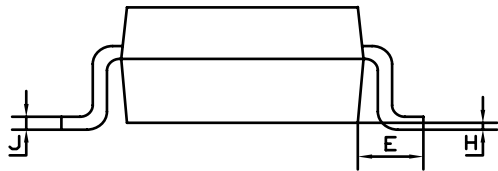
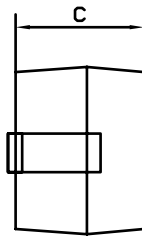
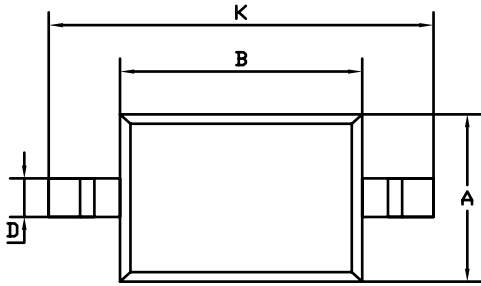




SD03C THRU SD36C

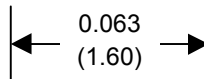
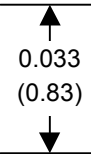
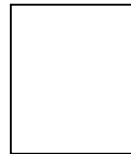
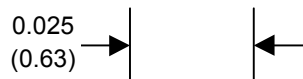
STANDARD CAPACITANCE TVS ARRAY / ESD ARRAY

SOD-323 PACKAGE OUTLINE & DIMENSIONS



SOD-323		
Dim	Min	Max
A	1.275	1.325
B	1.675	1.725
C	0.9 Typical	
D	0.25	0.35
E	0.27	0.37
H	0.02	0.1
J	0.1 Typical	
K	2.6	2.7
All Dimensions in mm		

SUGGESTED SOLDER PAD LAYOUT



inches(mm)